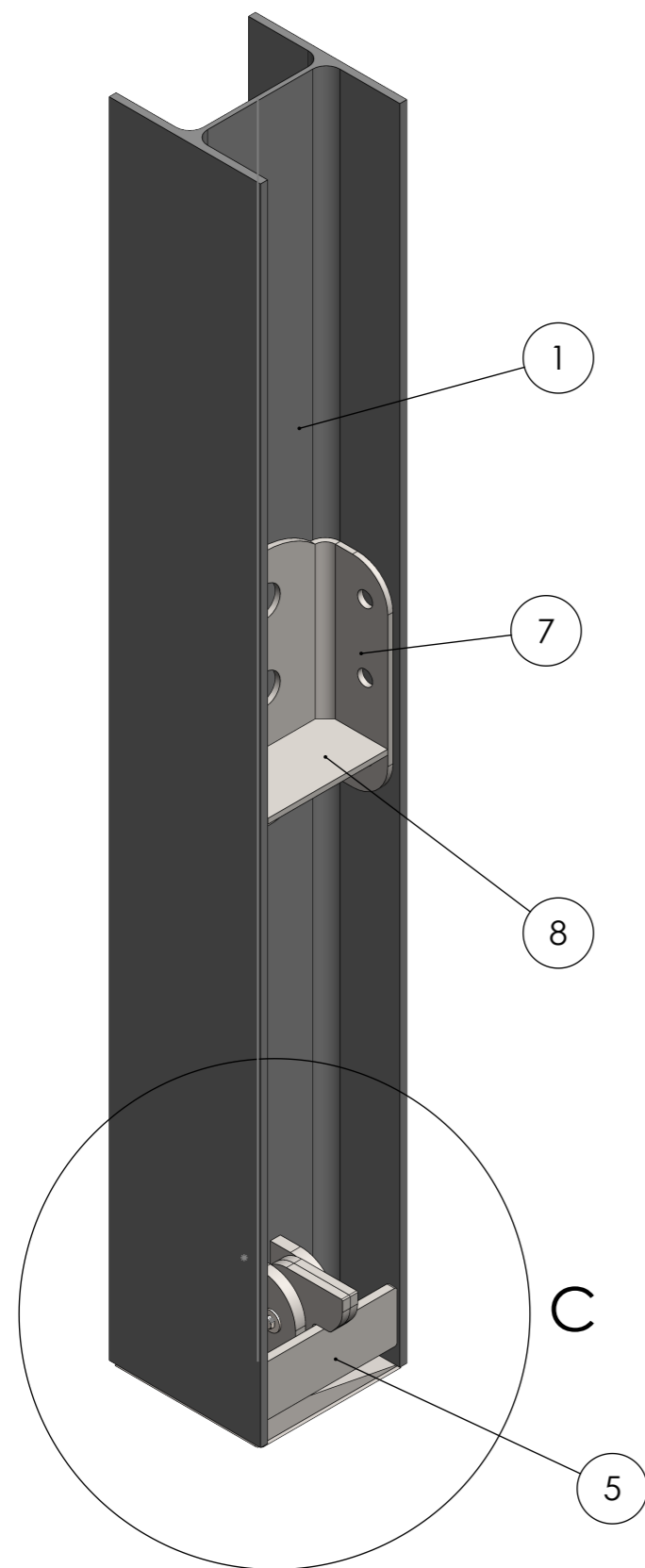
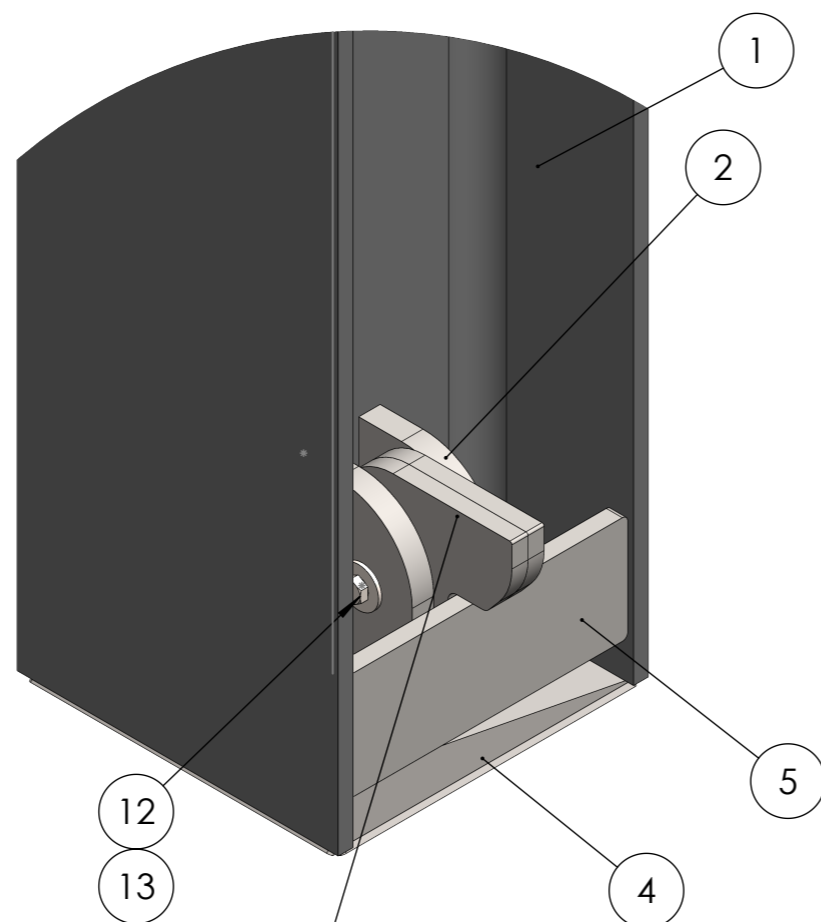


Pozicija	Detalės nr	Medžiaga	Storis/dydis	Masė	Kiekis
1	AJ170.29.D	S355J2	HEA300	190	1
2	AJ170.00028.D	S355J2	20mm	2	4
3	AJ170.00027.D	S355J2	15mm	2	4
4	AJ170.0043.D	S235J2	5mm	4	1
5	AJ170.0048.D	S355J2	15mm	3	2
6	AJ170.0047.D	S355J2	D30	0	2
7	AJ170.26.D	S355J2	10mm	15	2
8	AJ170.28.D	S355J2	10mm	2	2
9	AJ170.30.D	S355J2	1-1.5mm	0	2
10	Narelis DIN 5685C	S355J2	5mm	0	1
11	Narelis 2 DIN 5685C	S355J2	5mm	0	2
12	DIN 24017 - M12 x 25-N				4
13	Poveržlė DIN 9021 - 13				4

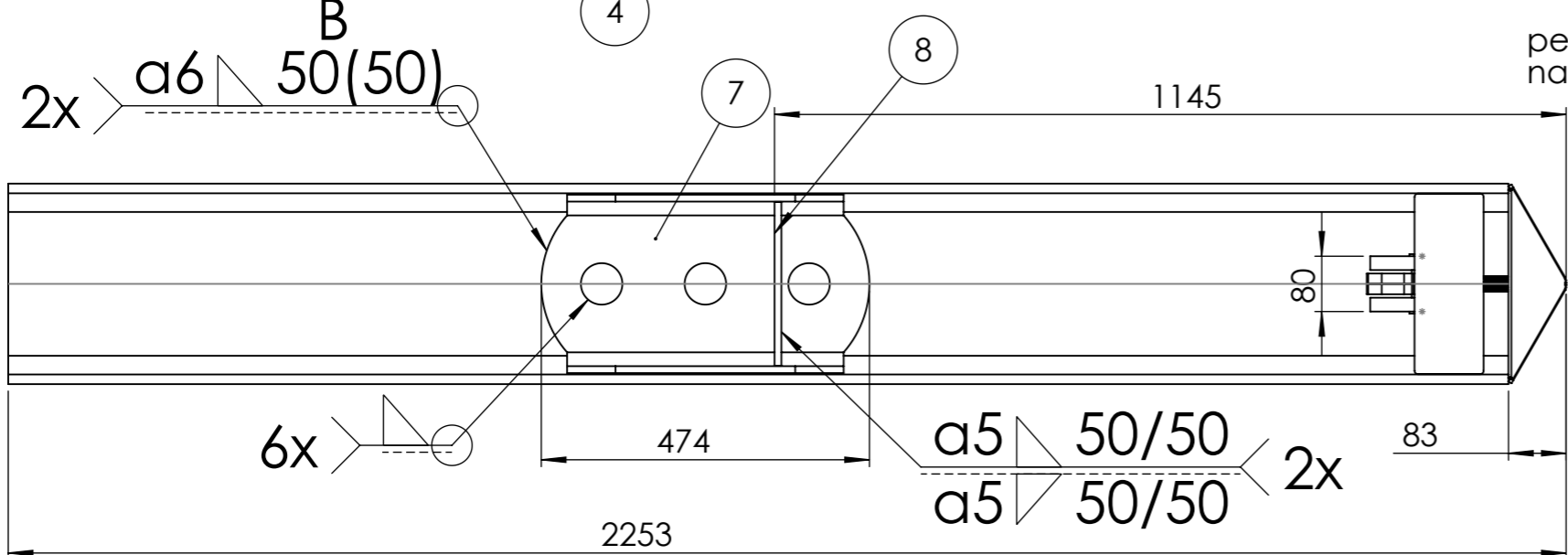
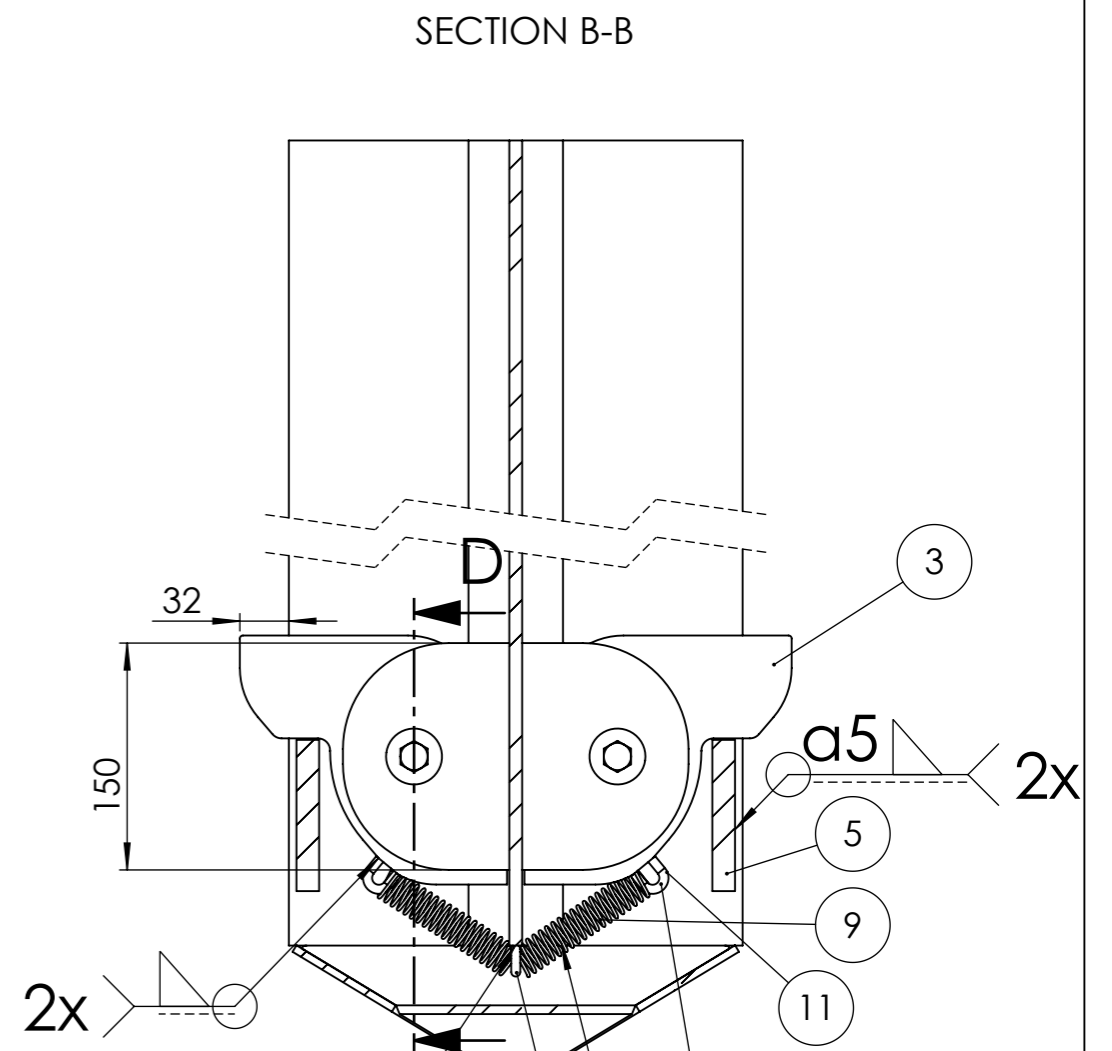
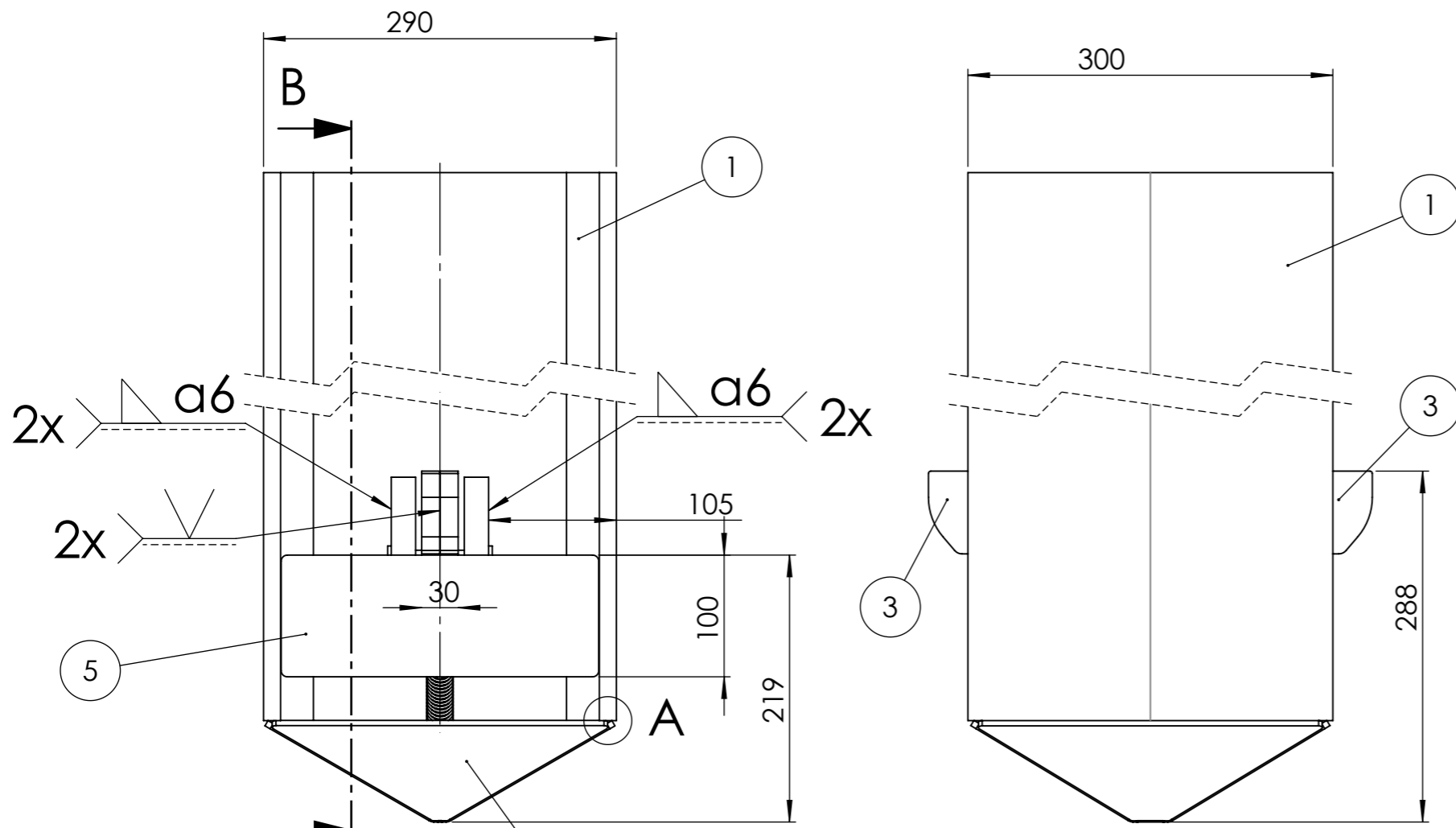


DETAIL C
SCALE 1 : 5

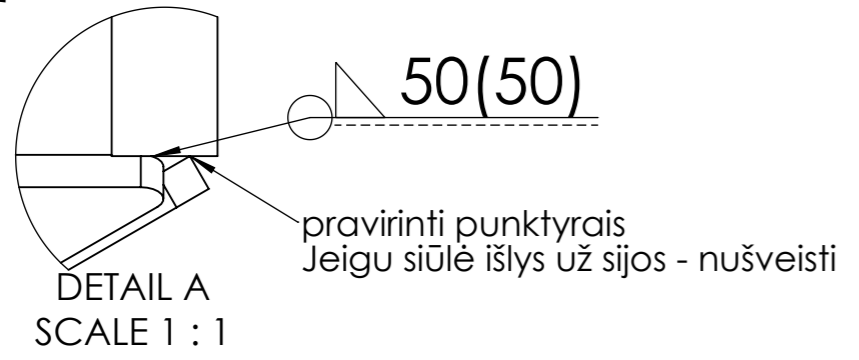
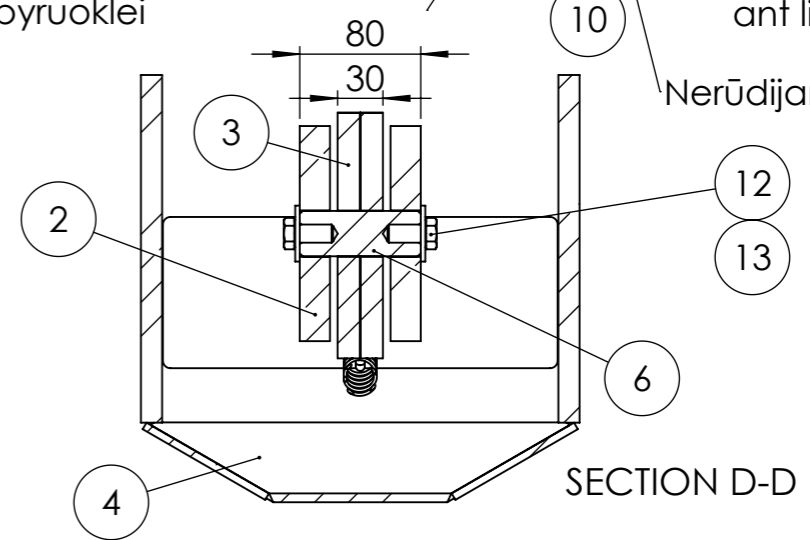


užrako mechanizmas

<p>THIRD ANGLE PROJECTION</p>		<p>AJ170.0015.M</p>	
<p>UNLESS OTHERWISE SPECIFIED DIMENSION ARE IN MM</p> <p>TOLERANCES</p> <p>X - ±1</p> <p>XX - ±0.5</p> <p>XXX - ±0.25</p> <p>ANGLE - ±1°</p> <p>RAD/CHAM - ±0.5</p> <p>REMOVE ALL BURRS AND SHARP</p>		<p>Sija 300</p>	
REV.		MATERIAL -	
		WORKPIECE -	
		SCALE: 1:10	WEIGHT: 253
		SIZE: A3	SHEET 1 OF 2
		NAME	DATE
		DRAWN	2025-01-07
		CHECKED	2025-01-07
		ENG. APPR.	



per vidurį sijos privirinti grandinės narelių spyruoklei
 privirinti pusę narelio ant liežuvio
 Nerūdijančio pl. spyruoklė



THIRD ANGLE PROJECTION		AJ170.0015.M	
UNLESS OTHERWISE SPECIFIED DIMENSION ARE IN MM		Sija 300	
TOLERANCES		NAME	
X - ±1		DATE	
XX - ±0.5		DRAWN	
XXX - ±0.25		CHECKED	
ANGLE - ±1°		ENG. APPR.	
RAD/CHAM - ±0.5		SCALE: 1:5	
REMOVE ALL BURRS AND SHARP		WEIGHT: 253	
REV.	WORKPIECE -	SIZE: A3 SHEET 2 OF 2	